

Psychological Trauma: Theory, Research, Practice, and Policy

The Role of Cumulative Trauma, Betrayal, and Appraisals in Understanding Trauma Symptomatology

Christina Gamache Martin, Lisa DeMarni Cromer, Anne P. DePrince, and Jennifer J. Freyd
Online First Publication, November 28, 2011. doi: 10.1037/a0025686

CITATION

Martin, C. G., Cromer, L. D., DePrince, A. P., & Freyd, J. J. (2011, November 28). The Role of Cumulative Trauma, Betrayal, and Appraisals in Understanding Trauma Symptomatology. *Psychological Trauma: Theory, Research, Practice, and Policy*. Advance online publication. doi: 10.1037/a0025686

The Role of Cumulative Trauma, Betrayal, and Appraisals in Understanding Trauma Symptomatology

Christina Gamache Martin
University of Oregon

Lisa DeMarni Cromer
University of Tulsa

Anne P. DePrince
University of Denver

Jennifer J. Freyd
University of Oregon

Poor psychological outcomes are common among trauma survivors, yet not all survivors experience adverse sequelae. The present study examined links between cumulative trauma exposure as a function of the level of betrayal (measured by the relational closeness of the survivor and the perpetrator), trauma appraisals, gender, and trauma symptoms. Participants were 273 college students who reported experiencing at least one traumatic event on a trauma checklist. Three cumulative indices were constructed to assess the number of different types of traumas experienced that were low, moderate, or high in betrayal (HBT). Greater trauma exposure was related to more symptoms of depression, dissociation, and posttraumatic stress disorder, with exposure to HBTs contributing the most. Women were more likely to experience HBTs than men, but there were no gender differences in trauma-related symptoms. Appraisals of trauma were predictive of trauma-related symptoms beyond the effects explained by cumulative trauma at each level of betrayal. The survivor's relationship with the perpetrator, the effect of cumulative trauma, and their combined effect on trauma symptomatology are discussed.

Keywords: cumulative trauma, betrayal, appraisals, gender, trauma symptomatology

Exposure to traumatic events is frequently linked to poor psychological outcomes, including depression, dissociation, and posttraumatic stress disorder (PTSD; Briere & Jordan, 2009; Gillespie et al., 2009; Greif Green et al., 2010). However, symptom severity and duration vary greatly among trauma survivors from minimal or no adverse reactions to short-term or chronic symptomatology (Breslau, 2009; Kessler, Chiu, Demler, & Walters, 2005). For better understanding of symptom variability and better informed interventions aimed at mitigating persistent, adverse reactions to traumatic events, much research has focused on identifying the trauma-related factors that best predict negative mental health outcomes. Greater frequency, severity, and duration typically result in worse outcomes, but when examined across studies, the

magnitude with which these factors affect psychological outcomes varies (as reviewed by Briere & Jordan, 2009). These inconsistencies highlight the nuanced and multidimensional nature of trauma and its sequelae, suggesting the possibility that additional factors be considered. The present study extends the literature by considering the cumulative effect of different types of trauma. In particular, we consider the role of interpersonal relationships and betrayal. We also examine the survivors' appraisals of trauma and gender differences as predictors of depression, dissociation, and PTSD symptoms. Here we review the literature for each of these potential contributing factors.

Trauma Characteristics and Related Outcomes

Cumulative Trauma Exposure

Many studies in the maltreatment literature focus on single types of trauma (e.g., only sexual abuse/assaults, neglect, or interpersonal violence; Finkelhor, Ormrod, & Turner, 2007a, 2007b). Such studies may not account for the effect of other types of traumas experienced by participants and, consequently, may overestimate the effects of the singular type of trauma examined (Saunders, 2003). When studies include more than one type of trauma, the majority of trauma survivors report exposure to multiple categories of trauma (Arata, Langhinrichsen-Rohling, Bowers, & O'Farrill-Swails, 2005; Dong et al., 2004; Edwards, Holden, Felitti, & Anda, 2003; Finkelhor et al., 2007a, 2007b; Greif Green et al., 2010). Moreover, compared with survivors exposed to a single trauma type, survivors of multiple trauma types, particularly adverse childhood events (ACEs), are more likely to experience chronic

Christina Gamache Martin and Jennifer J. Freyd, Department of Psychology, University of Oregon; Lisa DeMarni Cromer, Department of Psychology, University of Tulsa; Anne P. DePrince, Department of Psychology, University of Denver.

Support for this research was provided by the National Institutes of Mental Health, Grant MH06824-01A1 awarded to Anne P. DePrince, and the Development of Psychopathology Research Training Grant, 5T32-MH20012-13, awarded to Christina Gamache Martin. Additional support was provided by the University of Oregon Foundation Fund for Research on Trauma and Oppression (PI Jennifer J. Freyd). We thank all of the participants and our colleagues from the Dynamics Lab and the Traumatic Stress Studies Group.

Correspondence concerning this article should be addressed to Christina Gamache Martin, Department of Psychology, 1227 University of Oregon, Eugene, OR 97403-1227. E-mail: gamachem@uoregon.edu

psychological and health problems such as depression, anxiety, aggression, sleep disturbance, severe obesity, somatic complaints, and substance abuse (Anda et al., 2006; Arata et al., 2005; Edwards et al., 2003; Finkelhor et al., 2007a, 2007b; Greif Green et al., 2010). These studies suggest that it is not merely the number of traumatic events experienced but also the number of unique types of trauma experienced that contributes to negative outcomes.

In the present study, the term *cumulative trauma* refers to the number of different trauma types (and not the total number of traumatic incidents) experienced. In this sense, someone who was sexually abused several times by one or more perpetrators but who experienced no other trauma types would be defined as having a single trauma type, whereas someone who was both sexually and physically abused, regardless of the frequency or number of perpetrators, would be defined as having multiple trauma types (i.e., 2) and, thus, as having experienced cumulative trauma.

Cumulative trauma is an important predictor of trauma and health-related outcomes. The effect of any unique trauma, among multiple types, is less clear. Some work suggests that the individual contribution of a single trauma type to the severity of outcomes is reduced when cumulative trauma is considered (Finkelhor et al., 2007a). However, Greif Green and colleagues (2010) found a differential effect for traumatic events considered to be maladaptive to family functioning (i.e., child sexual abuse, family violence) when examining the effects of cumulative trauma. They found that increases in cumulative trauma considered maladaptive to family functioning were more predictive of psychological distress than similar increases in other types of adverse events (i.e., parental death). Similarly, in a study examining the effects of ACEs, Edwards and her colleagues (Edwards, Freyd, Dube, Anda, & Felitti, in press) found that survivors of child sexual abuse experienced more adverse events and worse physical and psychological outcomes in adulthood when their abuser was someone with whom they shared a close relationship. Thus, it may be that, in contrast to any single trauma type, traumas considered maladaptive to family functioning (e.g., interpersonal traumas perpetrated by someone with whom a close relationship was shared) might differentially influence trauma-related symptomatology.

Betrayal

The trauma survivor's relationship to the perpetrator is an established predictor of trauma-related psychopathology, with inter-familial or interpersonal traumas being associated with more negative psychological outcomes than extrafamilial or noninterpersonal traumas (Cromer & Smyth, 2010; Freyd, Klest, & Allard, 2005; Lawyer, Ruggiero, Resnick, Kilpatrick, & Saunders, 2006). Betrayal trauma theory (Freyd, 1996) offers one possible explanation to account for these differences. Founded in attachment theory, betrayal trauma theory proposes that trauma perpetrated by someone whom the victim trusts or on whom the victim depends (i.e., a high-betrayal trauma; HBT) is more psychologically damaging than trauma perpetrated by someone with whom the victim is not close, or a noninterpersonal trauma. The concurrent states of dependence and abuse are at odds with one another, creating a conflict for the victim between the need to stay engaged in a relationship and the need to defend oneself. According to betrayal trauma theory, betrayal awareness is suppressed when

survival and attachment are at stake. To obtain basic needs (e.g., food, shelter, or attachment), the victim will attempt to maintain a relationship with the perpetrator, potentially resulting in unawareness of the trauma and/or self-blame. This puts victims at long-term risk for mental health problems. It is not a surprise that survivors of HBTs experience greater depression, dissociative tendencies, and posttraumatic stress compared with survivors of low-betrayal traumas (LBTs; Freyd et al., 2005; DePrince, 2005; Tang & Freyd, in press). Because of the distinct effect of HBTs compared with LBTs, the level of betrayal may categorically distinguish the differential effect of different types of trauma.

Trauma Appraisals

Theoretical models have posited the role of cognitive appraisals as mediators in the development and persistence of trauma-related psychopathology (Ehlers & Clark, 2000; Foa, Stekette, & Rothbaum, 1989). Appraisals include survivors' assessments of their thoughts, feelings, and behaviors in response to trauma exposure (e.g., assessment of presence and severity of self-blame; see DePrince, Chu, & Pineda, in press). Evidence suggests that negative appraisals account for symptoms of depression and posttraumatic stress beyond amount and severity of trauma among survivors of interpersonal and noninterpersonal traumas (e.g., Andrews, Brewin, Rose, & Kirk, 2000; Cromer & Smyth, 2010; DePrince et al., in press; Ellis, Nixon, & Williamson, 2009; Fairbrother & Rachman, 2006). Thus, the manner in which trauma survivors evaluate their experiences of trauma appears to affect trauma symptoms beyond objective factors.

Gender

Gender is consistently linked to depression and PTSD in trauma survivors. Although men typically report being exposed to more traumatic events than do women, women generally have higher prevalence rates of PTSD (Breslau, 2009). Similarly, there are disparate prevalence rates for major depressive disorder between women and men, with women more often manifesting depressive symptoms than men (Kessler, McGonagle, Swartz, Blazer, & Nelson, 1993). These varying gender outcomes may result from differences in the types of traumatic events experienced or the strategies used to overcome them (as reviewed by Accortt, Freeman, & Allen, 2008). For example, women tend to experience significantly more interpersonal trauma (Barlow & Cromer, 2006; Gavranidou & Rosner, 2003; Goldberg & Freyd, 2006). In a recent study, Tang and Freyd (in press) found that increased PTSD symptoms for women were partially mediated by traumatic experiences perpetrated by someone with whom the survivor shared a close relationship (i.e., HBT). These findings suggest that there may be gender differences in the types of trauma experienced and that worse outcomes in women are predicted by their increased exposure to trauma higher in betrayal.

The Present Study

The present study was designed to examine links between cumulative trauma within relationally specific categories of trauma (defined as LBT, moderate-betrayal trauma [MBT], and HBT), trauma-related appraisals, gender, and trauma symptomatology. In

line with previous research (Goldberg & Freyd, 2006; Tang & Freyd, in press), we hypothesized that female trauma survivors would report experiencing more HBTs than male trauma survivors would (Hypothesis 1a) and more depression and PTSD symptoms than male trauma survivors would (Hypothesis 1b; Accortt et al., 2008; Breslau, 2009). We further hypothesized that HBTs would account for the relationship between gender and symptomatology (Hypothesis 1c). We hypothesized that increases in the number of traumas experienced would be predictive of depression, dissociation, and PTSD symptoms (Hypothesis 2a) and that the cumulative effects of trauma would better predict trauma-related symptoms as the level of betrayal increased (Hypothesis 2b). Moreover, we predicted that trauma appraisals would contribute to outcomes of trauma beyond the effects explained by cumulative trauma at each level of betrayal (Hypothesis 3). We similarly expected that increases in cumulative trauma would be associated with stronger appraisals, where HBTs would be the most predictive, followed by MBTs and LBTs, respectively (Hypothesis 4).

Method

Participants

Participants were 468 college students enrolled in an introductory-level psychology course at a university in the northwestern United States. Participants were recruited by way of an online research management system and received course credit for participating. The present study included 273 students who endorsed having experienced at least one traumatic event on a trauma checklist. Ten participants were excluded as a result of missing data, and one participant was excluded for not identifying a gender. The participants included in the present study were mostly female ($n = 188$; 69%) and were an average age of 20.36 years ($SD = 3.99$). The majority of participants identified as Caucasian (82%), 7% as multiracial, 5% as Asian, 4% as other, 1% as Native American, and fewer than 1% declined to answer. Likewise, most participants identified as non-Hispanic/Latino (92%). Participants excluded from analyses were significantly younger in age ($M = 19.61$, $SD = 2.63$) than those included, $t(463) = 2.31$, $p = .021$, $d = 0.218$; but they did not differ by gender, $\chi^2(1, N = 465) = 1.73$, $p = .189$, $\phi = .061$; or race, $\chi^2(4, N = 463) = 3.53$, $p = .474$, $\phi = .087$.

Measures

Trauma exposure and betrayal. The Brief Betrayal Trauma Survey (BBTS; Goldberg & Freyd, 2006) is a 12-item self-report measure assessing the frequency and severity of betrayal—LBT, MBT, and HBT—for traumatic events that have occurred during childhood and adulthood. The level of betrayal pertains to the relational closeness of the trauma survivor to the perpetrator. Three LBT items assess traumas that are typically absent of trust or an interpersonal component, such as natural disasters and accidents. Four MBT items assess interpersonal traumas that involve a personal or witnessed assault but without the presence of a close, trusting relationship, such as a physical or sexual assault by a stranger. Three HBT items assess the prevalence of interpersonal traumas (e.g., physical, sexual, and emotional abuse) perpetrated by someone with whom a close relationship was shared. The

BBTS has good construct validity (DePrince & Freyd, 2001) and test-retest reliability (Goldberg & Freyd, 2006), and a distinct difference in the severity of trauma sequelae between MBT and HBT has been demonstrated (Tang & Freyd, in press).

To create cumulative trauma indices, we dichotomized the BBTS items (0 = *never experienced*, and 1 = *experienced at least once*) and then summed them within each level of betrayal. The temporal period in which the event occurred (i.e., childhood vs. adulthood) did not augment the number of particular trauma types experienced (e.g., physical abuse categorized as an HBT experienced both in childhood and adulthood would only result in a single trauma type within the HBT index). In contrast to other indices of trauma (e.g., Anda et al., 2006; Finkelhor et al., 2007b), our index distinguishes between physical abuse perpetrated by a close other (i.e., an HBT) and physical abuse perpetrated by a nonclose other (i.e., an MBT), with each counted as a unique trauma type. Beyond relational closeness, the survivor-perpetrator relationship was not assessed. Two BBTS items were not included in the present analyses because of low base rates: One asked about the death of a child, and one was an open-ended question assessing traumatic events not evaluated in the measure.

Trauma appraisals. The Trauma Appraisal Questionnaire (TAQ; DePrince, Zurbriggen, Chu, & Smart, 2010) is a 54-item self-report measure that examines self-evaluations of beliefs, emotions, and behaviors in relation to experienced traumatic events. Participants were asked how they currently think about the traumatic event they experienced. If participants reported experiencing more than one traumatic event, they were asked to think about the event that was most traumatic or had the greatest effect on their life. Responses are made on a Likert-type scale ranging from 1 (*strongly disagree*) to 5 (*strongly agree*). The TAQ comprises six subscales—Betrayal, Self-Blame, Fear, Alienation, Anger, and Shame—and it has been shown to have good convergent and discriminant validity and test-retest reliability (DePrince et al., 2010). The full-scale score was used in the present analyses because the subscales were too highly correlated to reliably interpret differences in appraisal type. The coefficient alpha for the TAQ in the present sample was .97.

Depression and dissociation symptoms. The Trauma Symptom Checklist (TSC-40; Briere & Runtz, 1989) is a 40-item self-report measure that assesses trauma-related symptoms. For each symptom, respondents report its frequency during the previous 2 months using a Likert-type scale ranging from 0 (*never*) to 3 (*often*). The TSC-40 comprises six subscales, of which only the Depression and Dissociation subscales were used on the basis of our desire to examine these particular trauma sequelae in the present study. Scores could range from 0 to 36 on the Depression subscale and from 0 to 18 on the Dissociation subscale. The TSC-40 has good reliability and predictive validity (Briere, 1996). Coefficient alphas were .71 and .74 for the Depression and Dissociation subscales, respectively.

PTSD symptoms. The Revised Civilian Mississippi Scale for PTSD (RCMS; Norris & Perilla, 1996) is a 30-item self-report measure that assesses posttraumatic symptomatology. The first 18 items focus on symptoms related to a specific traumatic event, while the last 12 are not event specific. Responses are made on a Likert-type scale ranging from 1 = *not at all true* to 5 = *extremely true*. The RCMS has good psychometric properties (Norris &

Perilla, 1996), and the coefficient alpha for the current sample was .91.

Procedure

The university's Office for the Protection of Human Subjects approved this study before any data collection. Participation in the study fulfilled part of the students' course requirement. Participants did not self-select into the study on the basis of knowledge of its content. Participants completed all study measures, consent forms, and debriefing online.

Results

Trauma Exposure

A majority of participants experienced more than one type of trauma (63%), with over a quarter of all participants being exposed to four or more distinct trauma types (from a list of 10 types among the three levels of betrayal). Approximately 69% of participants experienced at least one LBT, 51% experienced at least one MBT, and 59% experienced at least one HBT. Bivariate Pearson correlation analyses (see Table 1) further indicated that the number of unique types of LBTs was significantly correlated with the number of unique types of MBTs experienced, and, likewise, the number of unique types of MBTs and HBTs experienced were significantly correlated. Cumulative trauma at all three levels of betrayal was significantly correlated with depressive, dissociative, and PTSD symptoms. Other significant relationships were found between age and cumulative trauma, with older participants reporting more MBTs and HBTs. Gender was significantly correlated with HBTs but not with MBTs or LBTs. Gender was also significantly correlated with trauma appraisals. Neither gender nor age was associated with depression, dissociation, or PTSD symptoms, and minority status was not significantly associated with any variables of interest.

Examination of the descriptive statistics for the variables of interest revealed a positive skew for each variable (see Table 1). Analyses were conducted with the raw, untransformed values and

values derived from a square root transformation. These analyses produced analogous results, and for ease of interpretation, non-transformed data are reported herein.

Gender, Trauma, and Trauma-Related Symptoms

We conducted independent-samples *t* tests to test our first set of hypotheses that (1a) women trauma survivors would report more HBTs than men and that (Hypothesis 1b) women would report more symptoms of depression and PTSD. As predicted, women trauma survivors reported significantly more HBTs ($M = 0.99$, $SD = 0.96$) than men ($M = 0.72$, $SD = 0.88$), $t(271) = -2.27$, $p = .02$, $d = 0.30$. Although women experienced more MBTs ($M = 0.88$, $SD = 1.05$) than men ($M = 0.82$, $SD = 1.11$), differences were not significant, $t(271) = -0.38$, $p = .70$, $d = 0.05$. Gender differences were not found for LBTs, $t(271) = -0.03$, $p = .98$, $d = 0.004$; with women ($M = 0.97$, $SD = 0.81$) and men ($M = 0.96$, $SD = 0.89$) reporting equivocally. In contrast to our hypotheses, women did not have significantly more depression than men ($M = 7.53$, $SD = 4.28$ vs. $M = 6.82$, $SD = 4.92$, respectively; $t[271] = -1.20$, $p = .23$, $d = 0.16$) or significantly more PTSD than men ($M = 56.32$, $SD = 15.98$ vs. $M = 52.86$, $SD = 14.20$, respectively; $t[271] = -1.72$, $p = .09$, $d = 0.23$). Given the lack of a statistically significant relationship between gender and depression and PTSD symptoms in this sample, we did not conduct the mediation analysis to examine the hypothesis that (Hypothesis 1c) HBTs would account for the relationship between gender and symptomatology.

Predicting Trauma-Related Symptoms

Multiple linear regression was used to test the hypothesis that cumulative trauma would be associated with greater trauma-related symptomatology, where HBTs would contribute the most to a regression model, followed by MBTs and LBTs. The cumulative trauma indices, by level of betrayal, were entered into the model simultaneously. We used the R (R Development Core Team, 2006) package relimp (Firth, 2006) to examine the relative importance of each cumulative trauma index according to Linde-

Table 1
Correlations Between Study Variables and Descriptive Statistics

Variable	1	2	3	4	5	6	7	8	9	10
1. Age	—									
2. Gender	-.03	—								
3. Minority	.04	-.01	—							
4. LBT	.10 [†]	.00	.03	—						
5. MBT	.22***	.02	.11 [†]	.25***	—					
6. HBT	.18**	.14*	.05	.09	.45***	—				
7. Appraisals	.08	.13*	.02	.11 [†]	.43***	.49***	—			
8. Depression	.03	.07	.03	.11 [†]	.27***	.31***	.51***	—		
9. Dissociation	.00	.00	-.01	.17**	.27***	.29***	.49***	.64***	—	
10. PTSD	.10 [†]	.10 [†]	.03	.20**	.37***	.49***	.73***	.57***	.51***	—
<i>M</i>	20.36	0.69	0.17	0.97	0.86	0.91	1.84	7.31	4.92	55.25
<i>SD</i>	3.97	0.46	0.38	0.83	1.07	0.94	0.77	4.49	3.41	15.50
Range	18–52	0–1	0–1	0–3	0–4	0–3	1–4.24	0–22	0–18	32–121

Note. Gender: male = 1, female = 2. Minority: nonminority = 0, minority = 1. LBT = low-betrayal trauma; MBT = moderate-betrayal trauma; HBT = high-betrayal trauma; PTSD = posttraumatic stress disorder.

[†] $p < .10$. * $p < .05$. ** $p < .01$. *** $p < .001$.

man, Merenda, and Gold's (1980) *lmg* method. The *lmg* method provides a natural decomposition of R^2 by averaging the sums of squares of each predictor across all orderings and is, thus, a more accurate method for comparing relative importance when predictors are correlated than comparing standardized beta values (Grömping, 2006). We added an additional step, which included trauma appraisals, to the model to test the hypothesis that trauma appraisals would contribute to trauma outcomes beyond the effects of the other variables. We examined bivariate Pearson correlation coefficients to determine whether the demographic variables would need to be controlled for in the regression analyses. Because there was not a statistically significant relationship between the demographic variables and the trauma symptoms, we did not control for them. Multicollinearity problems were assessed (Pedhazur, 1997), but none were found.

Depression. The cumulative trauma indices accounted for a significant amount of the variance in depression, adjusted $R^2 = .11$, $F(3, 269) = 11.86$, $p < .001$. MBTs and HBTs, but not LBTs, were significant predictors, where increases in the number of these unique traumas were associated with increases in symptoms (see Table 2). As predicted, HBTs contributed the most to the model, followed by MBTs and LBTs (lmg s = 0.07, 0.04, and <0.01 , respectively). Adding trauma appraisals to the model resulted in a significant increase in the amount of variance in depression explained, $\Delta R^2 = .15$, $F(1, 268) = 54.72$, $p < .001$; with the full model accounting for 26% of the variance in depression, adjusted $R^2 = .26$, $F(4, 268) = 24.35$, $p < .001$. Once trauma appraisals were added to the model, the independent effects of the MBTs and HBTs no longer reached statistical significance.

Dissociation. As with depression, the cumulative trauma indices accounted for a significant amount of the variance in dissociation, adjusted $R^2 = .11$, $F(3, 269) = 12.30$, $p < .001$. Level of dissociation increased significantly as the number of LBTs, MBTs, and HBTs increased (see Table 2), and as predicted, HBTs con-

tributed the most to the model, followed by MBTs and LBTs (lmg s = 0.06, 0.04, and 0.02, respectively). The amount of explained variance in dissociation increased significantly after trauma appraisals were added to the model, $\Delta R^2 = .14$, $F(1, 268) = 51.03$, $p < .001$; with the full model accounting for 25% of the variance in dissociation, adjusted $R^2 = .25$, $F(4, 268) = 23.70$, $p < .001$. LBTs, but not MBTs or HBTs, remained a significant predictor of dissociation after trauma appraisals were added to the model.

PTSD. Similar to the other trauma-related symptoms, the cumulative trauma indices accounted for a significant amount of the variance in PTSD symptoms, adjusted $R^2 = .28$, $F(3, 269) = 35.66$, $p < .001$. Cumulative trauma at each level of betrayal—LBTs, MBTs, and HBTs—significantly predicted symptoms of PTSD (see Table 2), and as hypothesized, HBTs contributed the most to the model, followed by MBTs and LBTs (lmg s = 0.19, 0.07, and 0.03, respectively). When the trauma appraisals were added to the model, the amount of explained variance in PTSD increased significantly, $\Delta R^2 = .29$, $F(1, 268) = 182.09$, $p < .001$; with the full model accounting for 57% of the variance in PTSD, adjusted $R^2 = .57$, $F(4, 268) = 90.24$, $p < .001$. LBTs and HBTs remained significant predictors of PTSD symptoms after trauma appraisals were added to the model.

Predicting Trauma Appraisals

We conducted a hierarchical linear regression to test Hypothesis 4—that increases in cumulative trauma would be associated with stronger appraisals where HBTs would be the most predictive, followed by MBTs and LBTs, respectively. To assess the relative importance of the cumulative trauma indices, we examined *lmg*s at the final step. Multicollinearity problems were assessed (Pedhazur, 1997) but were not problematic. Gender was controlled for because of its significant association with trauma appraisals (see

Table 2
Multiple Regression Analysis Predicting Depression, Dissociation, and PTSD Symptoms Within and by Level of Betrayal and Appraisals ($n = 273$)

Variable	Step 1			Step 2		
	<i>B</i>	<i>SE</i>	β	<i>B</i>	<i>SE</i>	β
Depression						
LBT	0.27	0.32	0.05	0.25	0.29	0.05
MBT	0.64	0.28	0.15*	0.14	0.26	0.03
HBT	1.11	0.31	0.23***	0.28	0.30	0.06
Appraisals				2.67	0.36	0.46***
Dissociation						
LBT	0.48	0.24	0.12*	0.47	0.22	0.11*
MBT	0.47	0.21	0.15*	0.10	0.20	0.03
HBTs	0.76	0.23	0.21**	0.16	0.23	0.04
Appraisals				1.97	0.28	0.45***
PTSD						
LBT	2.38	0.99	0.13*	2.28	0.77	0.12**
MBT	2.17	0.86	0.15*	-0.23	0.60	-0.02
HBT	6.82	0.95	0.41***	2.85	0.79	0.17***
Appraisals				12.84	0.95	0.64***

Note. PTSD = posttraumatic stress disorder; LBT = low-betrayal trauma; MBT = moderate-betrayal trauma; HBT = high-betrayal trauma.

* $p < .05$. ** $p < .01$. *** $p < .001$.

Table 1) and was entered in the first step of the model. The three cumulative trauma indices were then entered sequentially, according to level of betrayal (low to high), for a total of four steps. In Step 1, gender accounted for a significant portion of the variance in trauma appraisals, adjusted $R^2 = .02$, $F(1, 271) = 4.78$, $p = .030$; with women making significantly stronger appraisals (see Table 3). The addition of LBTs in Step 2 of the model, contrary to our hypothesis, did not result in a significant increase in the amount of variance in appraisal strength explained, $\Delta R^2 = .01$, $F(1, 270) = 3.20$, $p = .075$. Gender remained a significant predictor when LBTs were entered into the model.

The amount of explained variance in the strength of trauma appraisals increased significantly after MBTs were added to the model in Step 3, $\Delta R^2 = .17$, $F(1, 269) = 56.91$, $p < .001$. MBTs significantly predicted appraisal strength, and gender remained a significant predictor. In the final step of the model, the inclusion of HBTs also resulted in a significant increase in the amount of variance in trauma appraisal strength explained, $\Delta R^2 = .10$, $F(1, 268) = 39.64$, $p < .001$. The full model explained 29% of the variance in appraisal strength, adjusted $R^2 = .29$, $F(4, 268) = 28.95$, $p < .001$. Increases in MBTs and HBTs were associated with significant increases in trauma appraisal strength, with HBTs making the largest contribution, followed by MBTs and LBTs ($lmgs = 0.18, 0.12$, and <0.01 , respectively). Finally, when HBTs were included in the model, gender failed to reach statistical significance.

Discussion

In this study, we examined the role of cumulative trauma categorized by level of betrayal, gender, and the role of trauma appraisals on depression, dissociation, and PTSD symptoms. Consistent with previous research (Arata et al., 2005; Edwards et al., 2003; Finkelhor et al., 2007a, 2007b; Greif Green et al., 2010), these results suggest that trauma survivors are likely to experience more than one trauma type, highlighting that, for many, trauma exposure is more akin to an ongoing risk rather than an isolated event (Finkelhor, 2007a).

Men and women differed in their exposure to HBTs, with women experiencing more exposure. In contrast, men and women were equally likely to have experienced LBTs and MBTs. These results correspond with other studies that have compared interpersonal to noninterpersonal trauma and further the relational closeness of the survivor and perpetrator (Goldberg & Freyd, 2006; Kaehler & Freyd, 2009; Tang & Freyd, in press). Although women

reported more traumas perpetrated by someone close to them, they did not report more depression, dissociation, or PTSD symptoms than men. The relatively equal levels of trauma symptomatology across gender may have resulted from sampling a college student population. However, similar studies with college students have found gender differences in PTSD symptoms (Cromer & Smyth, 2010). Alternatively, it might be that the gender differences frequently found in trauma-related symptomatology are mediated by the survivor–perpetrator relationship (Tang & Freyd, in press), and there was not enough variability in the number of unique HBTs experienced (ranging from 0 to 3) across gender, compared with studies that have considered differences in the overall frequency of each HBT event (Tang & Freyd, in press).

Trauma symptomatology was predicted both by the cumulative experiences of trauma types within and by the level of betrayal. As hypothesized, trauma-related symptoms increased as the number of different trauma types increased within the LBT (with the exception of depression), MBT, and HBT categories, which is consistent with similar studies (e.g., Finkelhor, 2007a, 2007b). Moreover, we found that HBTs contributed more to models predicting trauma symptomatology, followed by MBTs, and LBTs (see Figure 1). These findings suggest that, in addition to the number of different trauma types experienced, the level of betrayal may contribute to our understanding of the development of trauma symptoms. In particular, these results demonstrate that, even among interpersonal traumas, those perpetrated by someone with whom the victim shares a close relationship are associated with more symptoms than those perpetrated by someone with whom the victim is not close. Survivors of HBTs may experience more trauma symptoms for several reasons. HBT survivors may be prone to make negative self-appraisals to maintain a relationship with an abusive attachment figure. Furthermore, HBT survivors have been shown to experience more adverse events during childhood (Edwards et al., in press) and higher revictimization rates than survivors of other trauma types (Gobin & Freyd, 2009). Also, the multilateral nature of HBTs, in which two developmental systems—attachment and individuation—are affected might be influential in HBT survivors experiencing more distress (Kira et al., 2008). It is important to note that this distinction in the level of trust within interpersonal traumas is not always identified in the literature, yet it appears to be a critical factor when examining the harmful effects of trauma.

When trauma appraisals were considered, they predicted depression, dissociation, and PTSD symptoms beyond the cumulative

Table 3
Hierarchical Multiple Regression Analysis Predicting Appraisal Strength Within and by Level of Betrayal Severity ($n = 273$)

Variable	Step 1			Step 2			Step 3			Step 4		
	<i>B</i>	<i>SE</i>	β	<i>B</i>	<i>SE</i>	β	<i>B</i>	<i>SE</i>	β	<i>B</i>	<i>SE</i>	β
Gender	0.22	0.10	0.13*	0.22	0.10	0.13*	0.20	0.09	0.12*	0.13	0.09	0.08
LBT				0.10	0.06	0.11	0.00	0.05	0.00	0.01	0.05	0.01
MBT							0.31	0.04	0.43***	0.19	0.04	0.26***
HBT										0.30	0.05	0.36***

Note. Reference category for gender is female. LBT = low-betrayal trauma; MBT = moderate-betrayal trauma; HBT = high-betrayal trauma.
* $p < .05$. ** $p < .01$. *** $p < .001$.

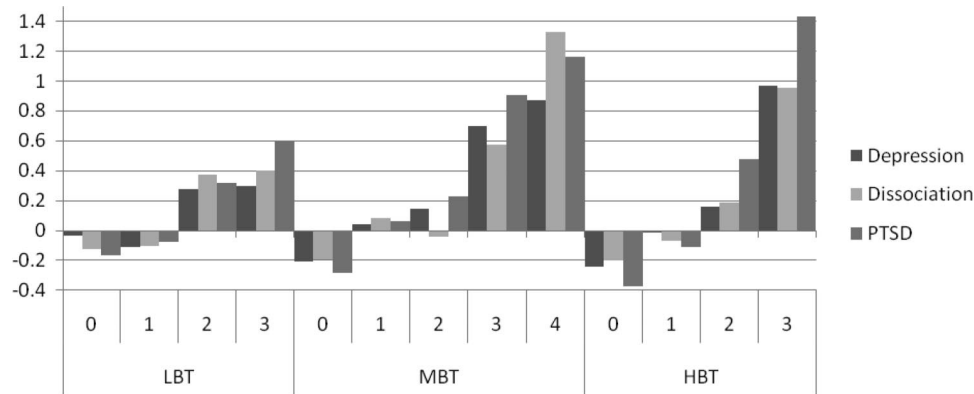


Figure 1. Trauma symptom z scores within and by the level of betrayal. LBT = low-betrayal trauma; MBT = moderate-betrayal trauma; HBT = high-betrayal trauma; PTSD = posttraumatic stress disorder.

trauma indices. Moreover, the previous significant associations between cumulative trauma, depression, and dissociation no longer reached statistical significance (with the exception of LBTs and dissociation) when trauma appraisals were considered. This finding suggests that the manner in which trauma survivors evaluate the trauma experiences, rather than cumulative trauma exposure or level of betrayal, most meaningfully predicts depression and dissociation. On the other hand, for PTSD symptoms, LBTs and HBTs were significant predictors in addition to trauma appraisals. One possible explanation for the differences in trauma indices predicting symptomatology after appraisals have been considered may be that PTSD symptoms may be directly linked to the traumas experienced, whereas symptoms of depression and dissociation may be more associated with the way in which traumas are interpreted or appraised. Moreover, the majority of items on the questionnaire utilized to assess PTSD focused on symptoms specifically related to a traumatic event.

Cumulative trauma by level of betrayal was also associated with the strength of trauma appraisals. Although LBTs did not significantly contribute to appraisal strength, both MBTs and HBTs did. Furthermore, women made stronger negative appraisals compared with men, but when HBTs were considered, this gender difference became negligible, indicating that survivors of HBTs make more negative appraisals across gender. Thus, in terms of survivors' assessments of their beliefs, behaviors, and emotions regarding trauma exposure, not all traumas are equal: Interpersonal traumas, especially those where trust is violated, are associated with stronger negative appraisals. These findings have important implications for treatment applications. In particular, beyond the amount of trauma experienced, the way in which trauma survivors assess their thoughts, feelings, and behaviors in response to trauma exposure is directly related to trauma-relevant symptomatology. Thus, a better understanding of how survivors, particularly those having experienced interpersonal traumas by someone they trust, assess their experiences is important for cognitively-based treatment.

Limitations and Future Directions

This study contributes to our understanding of the differential effects of cumulative trauma on trauma-related symptomatology

when the level of betrayal and cognitions about the traumas are considered. There are some limitations however. First, the study used a convenience sample comprised of college students. Although college students are a heterogeneous group, with diverse backgrounds and trauma experiences occurring before and during their university tenure, a replication of these results in a larger community sample or a highly traumatized sample would be beneficial. Participants were predominantly female and Caucasian, so generalization is limited. Although we were interested in examining potential gender differences, our sample was primarily female, and a lack of power may have limited our results. Additional limitations include not counting multiple perpetrators separately, and the cross-sectional and retrospective self-report nature of the study. However, some researchers (e.g., Arata et al., 2005) have argued that conducting retrospective studies with college students may be more advantageous in reducing errors associated with retrospective reporting, as the amount of time between reporting and the actual experience of trauma may be reduced. Alternatively, the study's reliance on self-report measures might have resulted in an underreporting of traumatic life experiences (Tang, Freyd, & Wang, 2007).

Future research would benefit from longitudinal designs and varied methods for assessing trauma exposure. In addition to examining community and highly traumatized samples, the types of traumas included in the cumulative index should be expanded to include other forms of adversity and trauma that have been assessed in other studies. For example, in addition to child emotional, physical, and sexual abuse, the Adverse Childhood Experiences Study included forms of household dysfunction such as substance abuse, mental illness, or the incarceration of a household member, as well as parental separation or divorce (e.g., Anda et al., 2006). Kira and colleagues (Kira, Lewandowski, Templin, Ramaswamy, & Mohanesh, 2010; Kira, Smith, Lewandowski, & Templin, 2010) have found that intergroup traumas, such as discrimination (i.e., race, gender, sexual orientation, and religion), are also a strong independent predictor of trauma-related symptomatology and cumulative trauma research might benefit from the inclusion of these adversities. Finally, future research might also benefit from a more focused examination of trauma appraisals, including appraisal category and the cumulative effect of appraisals. Recent

studies suggest that specific categories of appraisals (e.g., threat, alienation) might differentially relate to trauma-related symptomatology (DePrince et al., in press) and that cumulative negative appraisals might be a stronger predictor than cumulative trauma (Kira et al., 2011).

Conclusions

Although trauma exposure is relatively common, determining who is at greatest risk for developing persistent trauma symptomatology is quite complex. Given the long-lasting nature of trauma-related symptoms for some trauma survivors, continued research in this area is needed to better inform intervention and treatment efforts. The results from this study suggest that the level of betrayal and trauma appraisals are both important factors that should be considered. More specifically, HBTs were associated with more depression, dissociation, and PTSD symptoms than MBTs and LBTs. However, when trauma appraisals were considered, appraisals were stronger predictors of outcomes than the cumulative trauma indices, suggesting that the manner in which trauma survivors think about and evaluate their experiences is an important component in determining prolonged distress, regardless of the trauma experienced. The strength of survivors' appraisals was influenced by the level of betrayal they experienced, with appraisal strength increasing as MBTs and HBTs increased. Although women were more likely to experience HBTs than men, they were no more likely to experience symptoms of depression, dissociation, or PTSD than men. These findings highlight the importance of considering not only the quantity of unique traumas experienced and the quality of the trauma survivors' relationship to the perpetrator but the appraisals of trauma made to better understand the long-term effect of trauma.

References

- Accortt, E. E., Freeman, M. P., & Allen, J. J. B. (2008). Women and major depressive disorder: Clinical perspectives on causal pathways. *Journal of Women's Health, 17*, 1583–1590. doi:10.1089/jwh.2007.0592
- Anda, R. F., Felitti, V. J., Bremner, D. J., Walker, J. D., Whitfield, C., Perry, B. D., . . . Giles, W. H. (2006). The enduring effects of abuse and related adverse experiences in childhood. *European Archives of Psychiatry and Clinical Neuroscience, 256*, 174–186. doi:10.1007/s00406-005-0624-4
- Andrews, B., Brewin, C. R., Rose, S., & Kirk, M. (2000). Predicting PTSD symptoms in victims of violent crime: The role of shame, anger, and childhood abuse. *Journal of Abnormal Psychology, 109*, 69–73. doi:10.1037/0021-843X.109.1.69
- Arata, C. M., Langhinrichsen-Rohling, J., Bowers, D., & O'Farrill-Swails, L. (2005). Single versus multi-type maltreatment: An examination of the long-term effects of child abuse. *Journal of Aggression, Maltreatment & Trauma, 11*, 29–52. doi:10.1300/J146v11n04_02
- Barlow, M. R., & Cromer, L. D. (2006). Trauma-relevant characteristics in a university human subjects pool population: Gender, major, betrayal and latency of participation. *Journal of Trauma and Dissociation, 7*, 59–75. doi:10.1300/J229v07n02_05
- Breslau, N. (2009). The epidemiology of trauma, PTSD, and other post-trauma disorders. *Trauma, Violence, & Abuse, 10*, 198–210. doi:10.1177/1524838009334448
- Briere, J. (1996). Psychometric review of the Trauma Symptom Checklist-40. In B. H. Stamm (Ed.), *Measurement of stress, trauma, and adaptation* (pp. 373–377). Lutherville, MD: Sidran Press.
- Briere, J., & Jordan, C. E. (2009). Childhood maltreatment, intervening variables, and adult psychological difficulties in women: An overview. *Trauma, Violence, & Abuse, 10*, 375–388. doi:10.1177/1524838009339757
- Briere, J., & Runtz, M. (1989). The Trauma Symptom Checklist (TSC-33): Early data on a new scale. *Journal of Interpersonal Violence, 4*, 151–163. doi:10.1177/088626089004002002
- Cromer, L. D., & Smyth, J. M. (2010). Making meaning of trauma: Trauma exposure doesn't tell the whole story. *Journal of Contemporary Psychotherapy, 40*, 65–72. doi:10.1007/s10879-009-9130-8
- DePrince, A. P. (2005). Social cognition and revictimization risk. *Journal of Trauma and Dissociation, 6*, 125–141. doi:10.1300/J229v06n01_08
- DePrince, A. P., Chu, A. T., & Pineda, A. S. (in press). Links between specific posttrauma appraisals and three forms of trauma-related distress. *Psychological Trauma: Theory, Research, Practice, and Policy*.
- DePrince, A. P., & Freyd, J. J. (2001). Memory and dissociative tendencies: The roles of attentional context and word meaning in a directed forgetting task. *Journal of Trauma & Dissociation, 2*, 67–82. doi:10.1300/J229v02n02_06
- DePrince, A. P., Zurbriggen, E. L., Chu, A. T., & Smart, L. (2010). Development of the Trauma Appraisal Questionnaire. *Journal of Aggression, Maltreatment, & Trauma, 19*, 275–299. doi:10.1080/10926771003705072
- Dong, M., Anda, R. F., Felitti, V. J., Dube, S. R., Williamson, D. R., Thompson, T. J., . . . Giles, W. H. (2004). The interrelatedness of multiple forms of childhood abuse, neglect, and household dysfunction. *Child Abuse & Neglect, 28*, 771–784. doi:10.1016/j.chiabu.2004.01.008
- Edwards, V. J., Freyd, J. J., Dube, S. R., Anda, R. F., & Felitti, V. J. (in press). Health outcomes by closeness of sexual abuse perpetrator: A test of Betrayal Trauma Theory. *Journal of Aggression, Maltreatment & Trauma*.
- Edwards, V. J., Holden, G. W., Felitti, V. J., & Anda, R. F. (2003). Relationship between multiple forms of childhood maltreatment and adult mental health in community respondents: Results from the adverse childhood experiences study. *American Journal of Psychiatry, 160*, 1453–1460. doi:10.1176/appi.ajp.160.8.1453
- Ehlers, A., & Clark, D. M. (2000). A cognitive model of posttraumatic stress disorder. *Behaviour Research and Therapy, 38*, 319–345. doi:10.1016/S0005-7967(99)00123-0
- Ellis, A. A., Nixon, R. D. V., & Williamson, P. (2009). The effects of social support and negative appraisals on acute stress symptoms and depression in children and adolescents. *British Journal of Clinical Psychology, 48*, 347–361. doi:10.1348/014466508X401894
- Fairbrother, N., & Rachman, S. (2006). PTSD in victims of sexual assault: Test of a major component of the Ehlers-Clark theory. *Journal of Behavior Therapy and Experimental Psychiatry, 37*, 74–93. doi:10.1016/j.jbtep.2004.08.004
- Finkelhor, D., Ormrod, R. K., & Turner, H. A. (2007a). Poly-victimization: A neglected component in child victimization. *Child Abuse & Neglect, 31*, 7–26. doi:10.1016/j.chiabu.2006.06.008
- Finkelhor, D., Ormrod, R. K., & Turner, H. A. (2007b). Polyvictimization and trauma in a national longitudinal cohort. *Development and Psychopathology, 19*, 149–166. doi:10.1017/S0954579407070083
- Firth, D. (2006). *Relimp: Relative contribution of effects in a regression model*. R package, Version 0.9–6. ftp://ftp.auckland.ac.nz/pub/software/CRAN/doc/packages/relimp.pdf
- Foa, E. B., Steketee, G., & Rothbaum, B. O. (1989). Behavioral/cognitive conceptualizations of post-traumatic stress disorder. *Behavior Therapy, 20*, 155–176. doi:10.1016/S0005-7894(89)80067-X
- Freyd, J. J. (1996). *Betrayal trauma: The logic of forgetting childhood abuse*. Cambridge, MA: Harvard University Press.
- Freyd, J. J., Klest, B., & Allard, C. B. (2005). Betrayal trauma: Relationship to physical health, psychological distress, and a written disclosure

- intervention. *Journal of Trauma & Dissociation*, 6, 83–104. doi:10.1300/J229v06n03_04
- Gavranidou, M., & Rosner, R. (2003). The weaker sex? Gender and post-traumatic stress disorder. *Depression and Anxiety*, 17, 130–139. doi:10.1002/da.10103
- Gillespie, C. F., Bradley, B., Mercer, K., Smith, A. K., Conneely, K., Gapen, M., . . . Ressler, K. J. (2009). Trauma exposure and stress-related disorders in inner city primary care patients. *General Hospital Psychiatry*, 31, 505–514. doi:10.1016/j.genhosppsych.2009.05.003
- Gobin, R. L., & Freyd, J. J. (2009). Betrayal and revictimization: Preliminary findings. *Psychological Trauma: Theory, Research, Practice, and Policy*, 1, 242–257. doi:10.1037/a0017469
- Goldberg, L. R., & Freyd, J. J. (2006). Self-reports of potentially traumatic experiences in an adult community sample: Gender differences and test-retest stabilities of the items in a brief betrayal trauma survey. *Journal of Trauma & Dissociation*, 7, 39–63. doi:10.1300/J229v07n03_04
- Greif Green, J., McLaughlin, K. A., Berglund, P. A., Gruber, M. J., Sampson, N. A., Zaslavsky, A. M., & Kessler, R. C. (2010). Childhood adversities and adult psychiatric disorders in the National Comorbidity Survey Replication. I: Associations with first onset of *DSM-IV* disorders. *Archives of General Psychiatry*, 67, 113–123. doi:10.1001/archgenpsychiatry.2009.186
- Grömping, U. (2006). Relative importance for linear regression in R: The package relaimpo. *Journal of Statistical Software*, 17, 1–27.
- Kaehler, L. A., & Freyd, J. J. (2009). Borderline personality characteristics: A betrayal trauma approach. *Psychological Trauma: Theory, Research, Practice, and Policy*, 1, 261–268. doi:10.1037/a0017833
- Kessler, R. C., Chiu, W. T., Demler, O., & Walters, E. E. (2005). Prevalence, severity, and comorbidity of 12-month *DSM-IV* disorders in the National Comorbidity Survey Replication. *Archives of General Psychiatry*, 62, 617–627. doi:10.1001/archpsyc.62.6.617
- Kessler, R. C., McGonagle, K. A., Swartz, M., Blazer, D. G., & Nelson, C. B. (1993). Sex and depression in the National Comorbidity Survey I: Lifetime prevalence, chronicity and recurrence. *Journal of Affective Disorders*, 29, 85–96. doi:10.1016/0165-0327(93)90026-G
- Kira, I. A., Lewandowski, L., Templin, T., Ramaswamy, V., Ozkan, B., & Mohanesch, J. (2008). Measuring cumulative trauma dose, types, and profiles using a development-based taxonomy of traumas. *Traumatology*, 14, 62–87. doi:10.1177/1534765608319324
- Kira, I. A., Lewandowski, L., Templin, T., Ramaswamy, V., Ozkan, B., & Mohanesch, J. (2010). The effects of perceived discrimination and backlash on Iraqi refugees' mental and physical health. *Journal of Muslim Mental Health*, 5, 59–81. doi:10.1080/15564901003622110
- Kira, I. A., Smith, I., Lewandowski, L., & Templin, T. (2010). The effects of gender discrimination on refugee torture survivors: A cross-cultural traumatology perspective. *Journal of the American Psychiatric Nurses Association*, 16, 299–306. doi:10.1177/1078390310384401
- Kira, I. A., Templin, T., Lewandowski, L., Ramaswamy, V., Ozkan, B., Abou-Mediane, S., . . . Alamia, H. (2011). Cumulative tertiary appraisals of traumatic events across cultures: Two studies. *Journal of Loss & Trauma*, 16, 43–66. doi:10.1080/15325024.2010.519288
- Lawyer, S. R., Ruggiero, K. J., Resnick, H. S., Kilpatrick, D. G., & Saunders, B. E. (2006). Mental health correlates of the victim-perpetrator relationship among interpersonally victimized adolescents. *Journal of Interpersonal Violence*, 21, 1333–1353. doi:10.1177/0886260506291654
- Lindeman, R. H., Merenda, P. F., & Gold, R. Z. (1980). *Introduction to bivariate and multivariate analysis*. Glenview, IL: Scott Foresman.
- Norris, H. F., & Perilla, J. L. (1996). The revised civilian Mississippi Scale for PTSD: Reliability, validity, and cross-language stability. *Journal of Traumatic Stress*, 9, 285–298. doi:10.1002/jts.2490090210
- Pedhazur, E. J. (1997). *Multiple regression in behavioral research: Explanation and prediction* (3rd ed.). Toronto, Ontario, Canada: Nelson Thompson Learning.
- R Development Core Team. (2006). *R: A language and environment for statistical computing*. Vienna, Austria: R Foundation for Statistical Computing. Retrieved from <http://www.R-project.org/>
- Saunders, B. E. (2003). Understanding children exposed to violence: Toward an integration of overlapping fields. *Journal of Interpersonal Violence*, 18, 356–376. doi:10.1177/0886260502250840
- Tang, S. S., & Freyd, J. J. (in press). Betrayal trauma and gender differences in posttraumatic stress. *Psychological Trauma: Theory, Research, Practice, and Policy*.
- Tang, S. S., Freyd, J. J., & Wang, M. (2007). What do we know about gender in the disclosure of child sexual abuse? *Journal of Psychological Trauma*, 6, 1–26. doi:10.1080/19322880802096442

Received January 14, 2011

Revision received July 18, 2011

Accepted August 22, 2011 ■